

Dvůr Králové, lávka u Schulzových sadů

Obsah

Titulní strana	1
Obsah	2
Obrazy	3

Listy s údaji výrobků

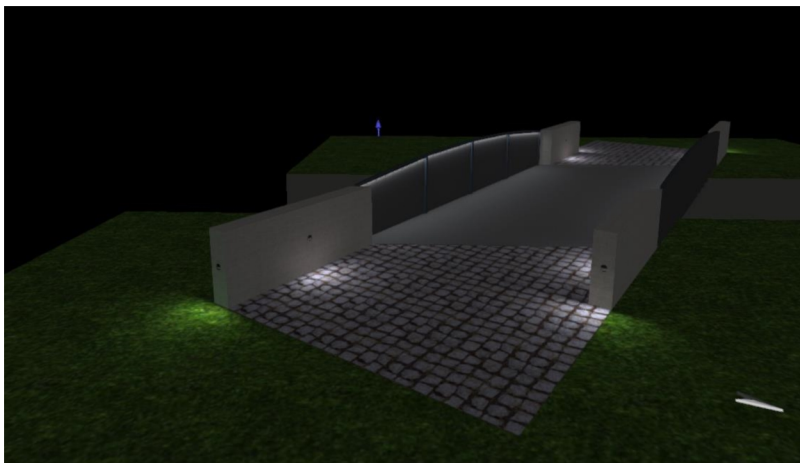
iGuzzini illuminazione S.p.A - Underscore InOut - E407.01 - Top-Bend 16mm version - Warm white Led - 24Vdc - L=254mm - 1.2W 90.8lm - 2800K - White (1x LED)	4
iGuzzini illuminazione S.p.A - Walky - round 4,6W (1x LED)	6

Plocha 1

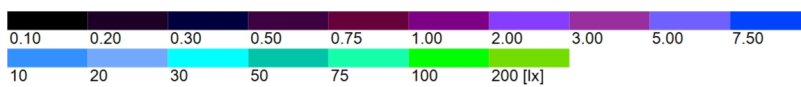
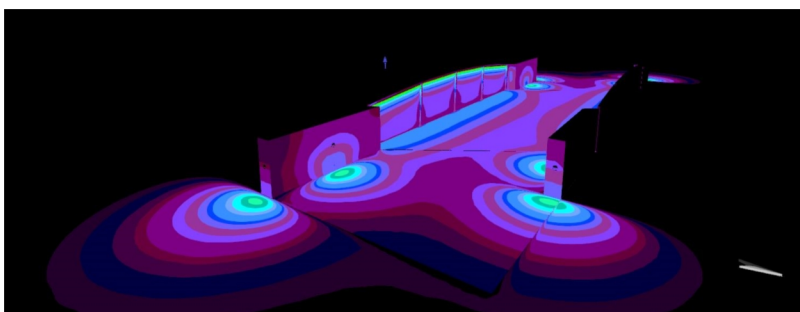
Výpočtové objekty / Lávka I	7
Výpočtová plocha 1 / Lávka I / Svislá intenzita osvětlení	9
Výpočtová plocha 2 / Lávka I / Svislá intenzita osvětlení	10

Obrazy

Most



Plocha 1 (10)

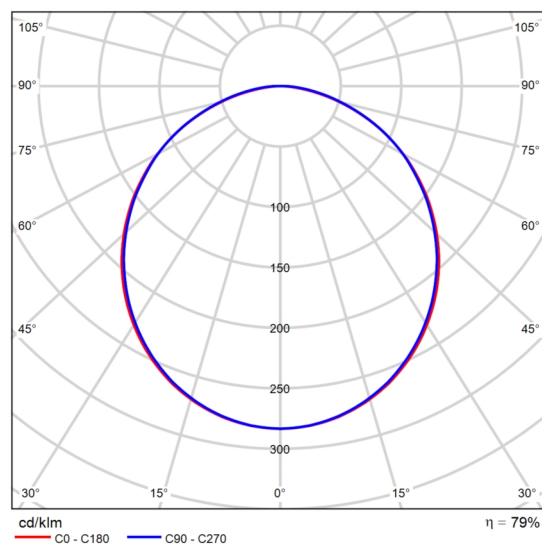


Datový list výrobku

iGuzzini illuminazione S.p.A - Underscore InOut - E407.01 - Top-Bend 16mm version - Warm white
Led - 24Vdc - L=254mm - 1.2W 90.8lm - 2800K - White



C. výrobku	E407_X129
P	1.2 W
ΦŽárovka	91 lm
ΦSvitidlo	72 lm
η	79.00 %
Světelný výtěžek	59.8 lm/W
CCT	3040 K
CRI	80



Polární LDC

E407 :

Luminaire for indoor and outdoor architectural linear lighting – with warm white monochrome Leds – on a 24Vdc flexible white circuit, length L=254mm. The led circuit is completely IP68 encapsulated with a white (outside) and milky finish (over light emission) high performance polymer sheath: this material allows the device to be installed and used even at extreme temperatures: -30°C +45°C. Underscore InOut TOP-BEND can be used to create straight lines on flat and curved surfaces. Even, spotfree lighting is guaranteed along the entire strip profile up to the end parts. On both ends (not the head), the product is supplied with a cable L=80mm with IP68 male and female connectors fitted with an anti-detachment locknut. The product is supplied with stainless steel wires to stop the body from misshaping as this may damage the led circuit. Easy to install and a robust design for difficult environments (for example, it is salt water, UV and solvent resistant). Minimum curving radius 250mm for 16mm TOP-BEND versions. The luminaire technical characteristics conform to EN 60598-1 standards and particular requirements.

X129 :

Surface-mounted High linear profile L=1000mm, with a housing for

Vyhodnocení oslnění dle UGR												
p Strop		70	70	50	50	30	70	70	50	50	30	
p Stěny		50	30	50	30	30	50	30	50	30	30	
p Podlaha		20	20	20	20	20	20	20	20	20	20	
Velikost místnosti X Y		Směr pohledu napříč k ose lampy					Podélný směr pohledu k ose lampy					
2H	2H	15.2	16.5	15.5	16.8	17.0	16.9	18.2	17.2	18.5	18.7	
	3H	16.2	17.4	16.5	17.7	18.0	18.4	19.6	18.7	19.9	20.1	
	4H	16.5	17.7	16.9	18.0	18.3	18.9	20.1	19.3	20.4	20.7	
	6H	16.7	17.8	17.0	18.1	18.4	19.3	20.4	19.7	20.7	21.0	
	8H	16.7	17.7	17.1	18.1	18.4	19.4	20.5	19.8	20.8	21.1	
4H	12H	16.7	17.7	17.0	18.0	18.3	19.5	20.5	19.9	20.8	21.2	
	2H	15.8	17.0	16.1	17.3	17.5	17.2	18.4	17.5	18.6	18.9	
	3H	17.0	18.0	17.4	18.3	18.7	18.8	19.8	19.2	20.1	20.5	
	4H	17.4	18.3	17.8	18.6	19.0	19.4	20.3	19.8	20.7	21.1	
	6H	17.6	18.4	18.0	18.8	19.2	19.9	20.7	20.3	21.1	21.5	
8H	12H	17.7	18.4	18.1	18.8	19.2	20.1	20.8	20.5	21.2	21.6	
	2H	17.7	18.3	18.1	18.7	19.2	20.2	20.9	20.6	21.3	21.7	
	4H	17.6	18.3	18.0	18.7	19.1	19.5	20.2	19.9	20.6	21.1	
	6H	17.9	18.5	18.4	18.9	19.4	20.1	20.6	20.5	21.1	21.5	
	8H	18.0	18.5	18.5	19.0	19.4	20.2	20.8	20.7	21.2	21.7	
12H	12H	18.0	18.5	18.5	18.9	19.4	20.4	20.8	20.9	21.3	21.8	
	4H	17.6	18.3	18.1	18.7	19.1	19.5	20.2	19.9	20.6	21.0	
	6H	17.9	18.5	18.4	18.9	19.4	20.0	20.6	20.5	21.0	21.5	
	8H	18.0	18.5	18.5	18.9	19.4	20.2	20.7	20.7	21.2	21.7	
Variace polohy pozorovatele pro vzdálenosti svítidel S												
S = 1.0H		+0.2 / -0.3					+0.1 / -0.1					
S = 1.5H		+0.4 / -0.7					+0.4 / -0.5					
S = 2.0H		+0.7 / -1.3					+1.0 / -1.1					
Standardní tabulka		BK04					BK05					
Korekturní sčítanec		-0.3					2.4					
Korigované osňovací indicie, vztaženy na 91lm Celkový světelný tok												

UGR diagram (SHR: 0.25)



Datový list výrobku

iGuzzini illuminazione S.p.A - Underscore InOut - E407.01 - Top-Bend 16mm version - Warm white
Led - 24Vdc - L=254mm - 1.2W 90.8lm - 2800K - White

a cable with a hidden Underscore connector. Made of anodised
aluminium.

E407.01 - Top-Bend 16mm version - Warm white Led - 24Vdc -
L=254mm - 1.2W 90.8lm - 2800K - White
A63D - Lamp LED WARM WHITE

Datový list výrobku

iGuzzini illuminazione S.p.A - Walky - round 4,6W

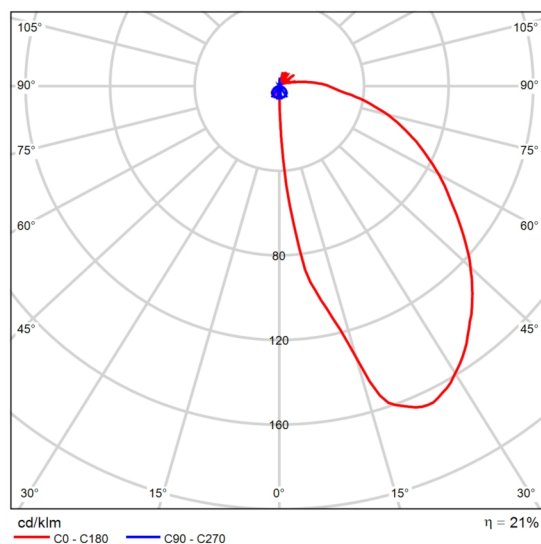


C. výrobku	EI26
P	4.6 W
ΦŽárovka	530 lm
ΦSvítidlo	111 lm
η	21.00 %
Světelný výtěžek	24.2 lm/W
CCT	3000 K
CRI	80

EI26 :

Luminaire for walkways designed to use high visual comfort LED lamps. Ceiling and wall-recessed installation. It consists of an optical assembly with an IP66 protection rating and an outer casing or wall-mounted base to be ordered separately. The optical assembly and base are made of aluminium alloy treated with powder paint, which provides a high level of resistance to weather and UV rays. Plastic closure guard at the rear of the optical assembly. Complete with plastic cable gland and outlet cable. Sodium-calcium tempered satin finish safety glass. Luminaire with no visible screws and an anti-vandal system that uses an opening key to access the rear wiring compartment (supplied in the package). All external screws used are made of A2 stainless steel.

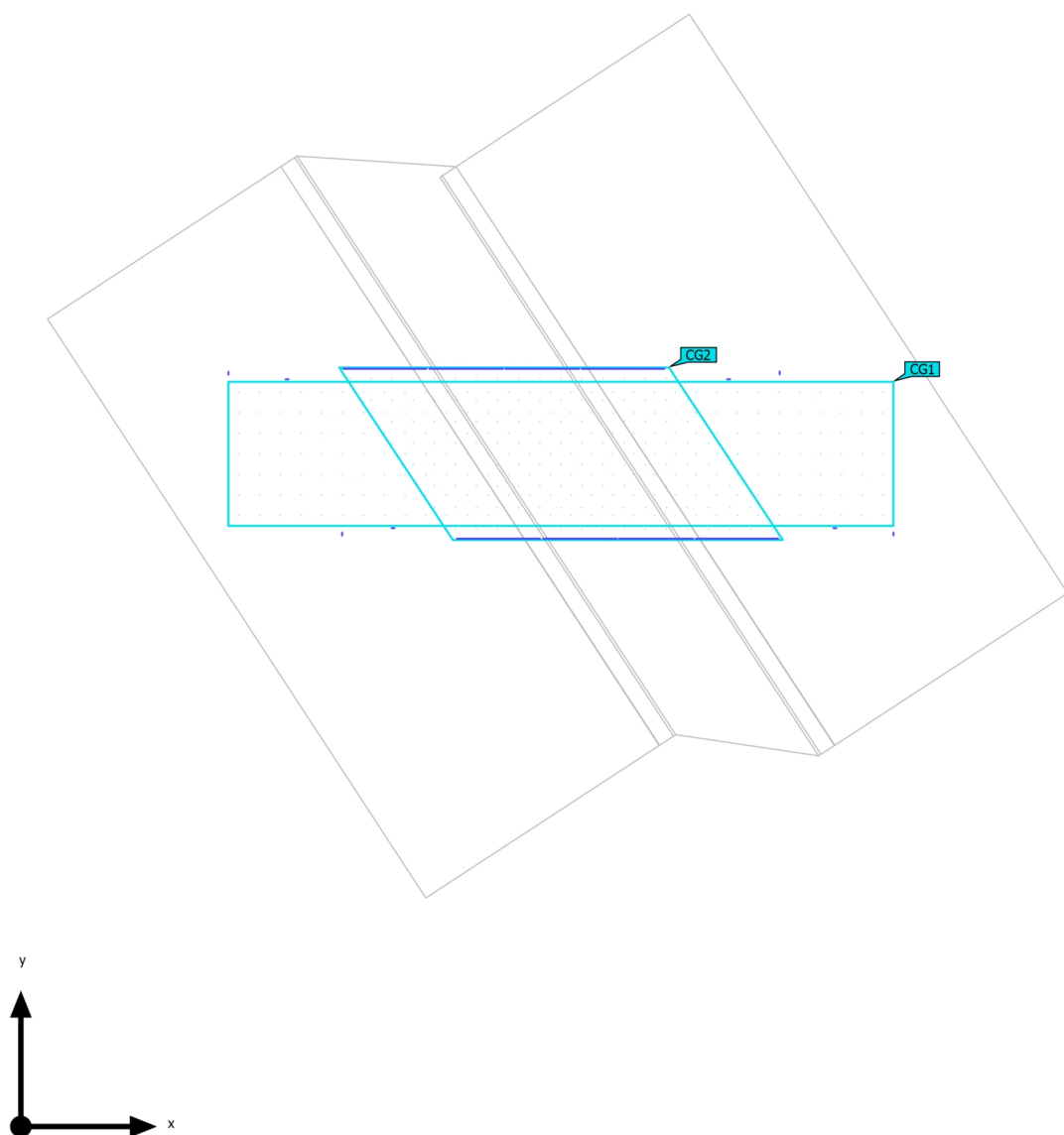
EI26.015 - Round optic assembly Ø100mm – AL optic – Warm White
LED – 24Vdc - 3.2W 530lm - 3000K - Grey
B10P - Lamp LED Warm White CRI>80



Polární LDC

Plocha 1 (Lávka I)

Výpočtové objekty



Plocha 1 (Lávka I)

Výpočtové objekty

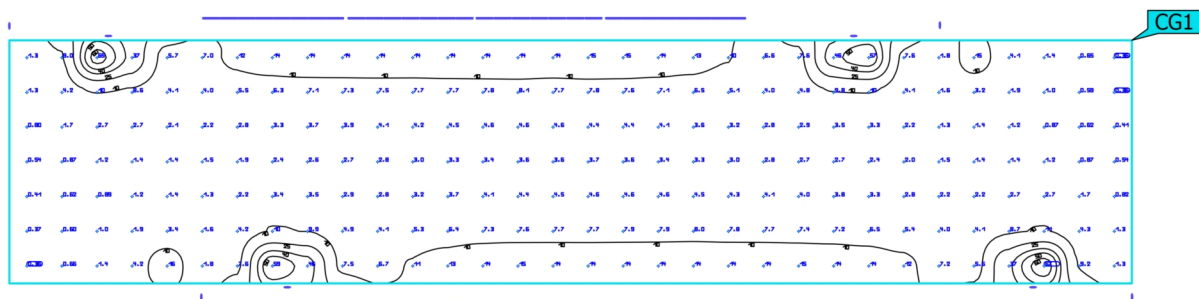
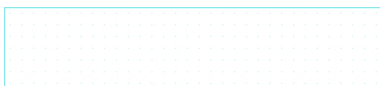
Výpočtové plochy

Vlastnosti	\bar{E}	E_{min}	E_{max}	g_1	g_2	Index
Výpočtová plocha 1 Svislá intenzita osvětlení Výška: 3.030 m	7.09 lx	0.36 lx	66.8 lx	0.051	0.005	CG1
Výpočtová plocha 2 Svislá intenzita osvětlení Výška: 3.050 m	9.37 lx	2.51 lx	20.2 lx	0.27	0.12	CG2

Užitný profil: Přednastavení DIALux (5.1.4 Standard (oblast dopravy ve volném prostoru))

Plocha 1 (Lávka I)

Výpočtová plocha 1

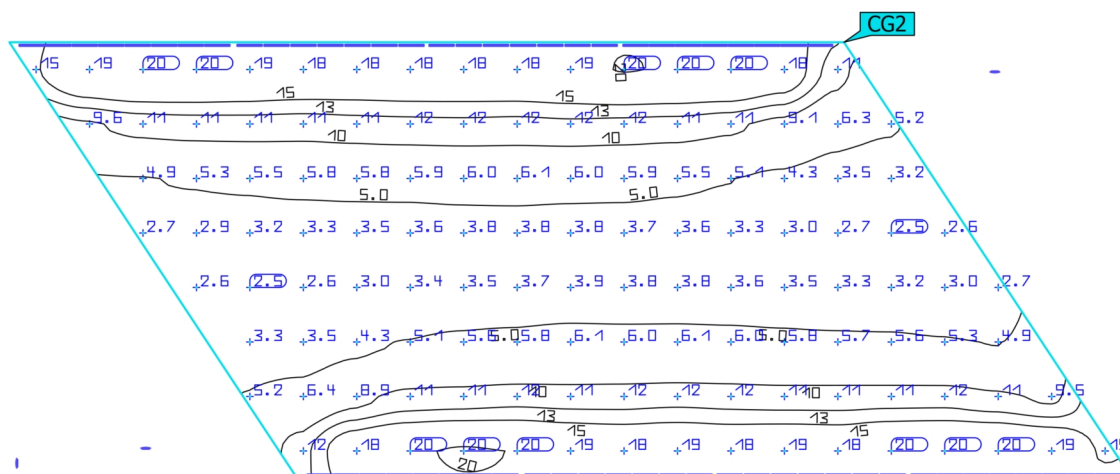


Vlastnosti	\bar{E}	E_{min}	E_{max}	g_1	g_2	Index
Výpočtová plocha 1	7.09 lx	0.36 lx	66.8 lx	0.051	0.005	CG1
Svislá intenzita osvětlení						
Výška: 3.030 m						

Užitný profil: Přednastavení DIALux (5.1.4 Standard (oblast dopravy ve volném prostoru))

Plocha 1 (Lávka I)

Výpočtová plocha 2



Vlastnosti	\bar{E}	E_{min}	E_{max}	g_1	g_2	Index
Výpočtová plocha 2	9.37 lx	2.51 lx	20.2 lx	0.27	0.12	CG2
Svislá intenzita osvětlení						
Výška: 3.050 m						

Užitný profil: Přednastavení DIALux (5.1.4 Standard (oblast dopravy ve volném prostoru))